

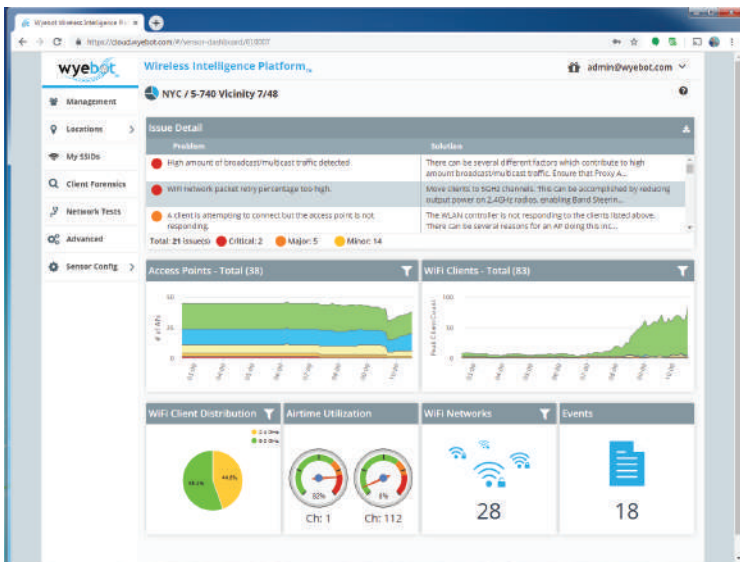
THE WIRELESS INTELLIGENCE PLATFORM

Increasingly, mission-critical applications for patient health, security, and monitoring depend on a strong and reliable wireless network. WiFi-enabled devices like infusion pumps and pacemakers, electronic medical records, and communication apps are used daily in hospitals, clinics, and medical offices. If the WiFi has performance issues, there are serious consequences.

The Wireless Intelligence Platform™ (WIP) ensures the entire network is running optimally. Market leading sensor technology, Artificial Intelligence, and Edge Computing perform real-time analysis of all wireless activity, including that from non-WiFi sources. With the secure MQTT protocol, WIP drops the payload data from the packet before transferring to the cloud for the performance of advanced, big data algorithms. All results are displayed on an easy-to-read dashboard. We identify and help you to eliminate small problems before they become big problems.

AUTONOMIC WIFI ASSURANCE

- Complete network visibility 24x7/365 - providing insight into entire wireless network including remote clinics
- Signatures added monthly as the system learns about your environment
- Automatic analysis of current or potential problems + actionable intelligence for resolution keeps networks running seamlessly
- Support for WiFi 6 (802.11ax) technology



WYEBOT IN HEALTHCARE

100% SUPPORT, 100% OF THE TIME

“ We’ve got 4-5 WiFi problem tickets a day in over a hundred different locations. We can’t possibly be in all those locations to resolve the issues in a timely manner. We need a proactive way to deal with that. We found it with the WyeBot solution.

- Major Hospital System -

SYNTHETIC NETWORK TESTING

- Ensures rapid response times even with limited staff and remote IT teams
- Suite of Network Tests remotely diagnoses and troubleshoots entire wired and wireless network, including applications
- Ability to run scheduled tests on demand

DEVICE FORENSICS

- 24x7 Complete visibility shows every connected device and complete wireless network infrastructure
- Classification of APs and Clients with device fingerprinting
- Historical data and analysis provides cost-effective capacity planning and eliminates problem-identification-and-resolution finger pointing

VENDOR AGNOSTIC

Because WIP is Vendor Agnostic and gives an unbiased view, all features benefit from WIP’s easy to use seamless integration with the existing network infrastructure. The result is future-proofing against the ever changing wireless technology and explosion of IoT devices.

WIP’S FEATURES PROMISE HEALTHCARE AN IMPROVED WIFI PERFORMANCE:

- WiFi-based patient monitoring expected to DOUBLE in the next few years / Save up to 90% in Mean-Time-to-Resolution
- Healthcare IoT market will reach \$14.7 billion by 2022 / Reduce WiFi problem tickets by more than 50%
- Outages occur if network traffic is not managed & monitored properly / Reduce remote site visits by up to 80%

WYEBOT IN HEALTHCARE



We have several different buildings including clinics and hospital buildings and they don't use the same wireless networking vendors. We love that WIP is vendor agnostic and can be used at all our locations.



AUTOMATED DETECTION, NOTIFICATION & MITIGATION

WIP automatically collects and processes all network activity, analyzing the data to detect network anomalies using an Artificial Intelligence-based engine.

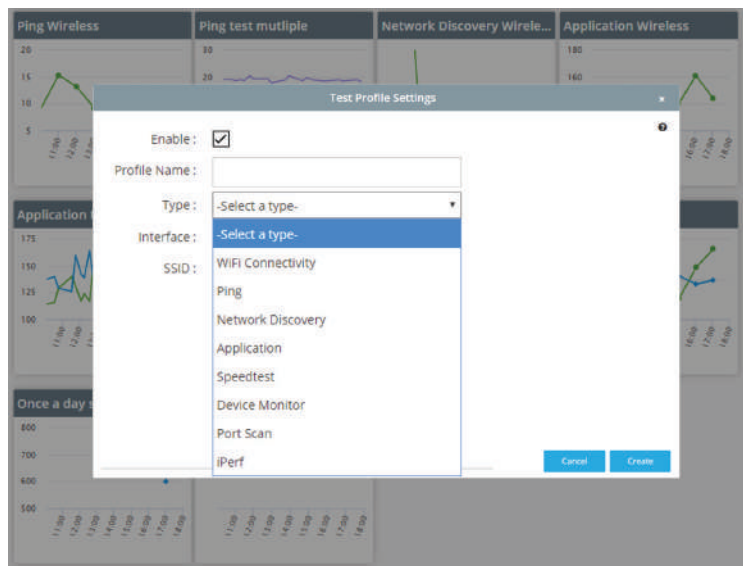
Clear and concise problem statements are presented, along with actionable intelligence to correct existing issues immediately eliminating finger-pointing or proactively prevent future issues.

SECURITY BREACH DETECTION

WIP's 24/7/365 monitoring detects and notifies staff of events such as newly detected APs, security mismatches between networks, potential DoS attacks, etc. and provides a solution to help pinpoint the source.

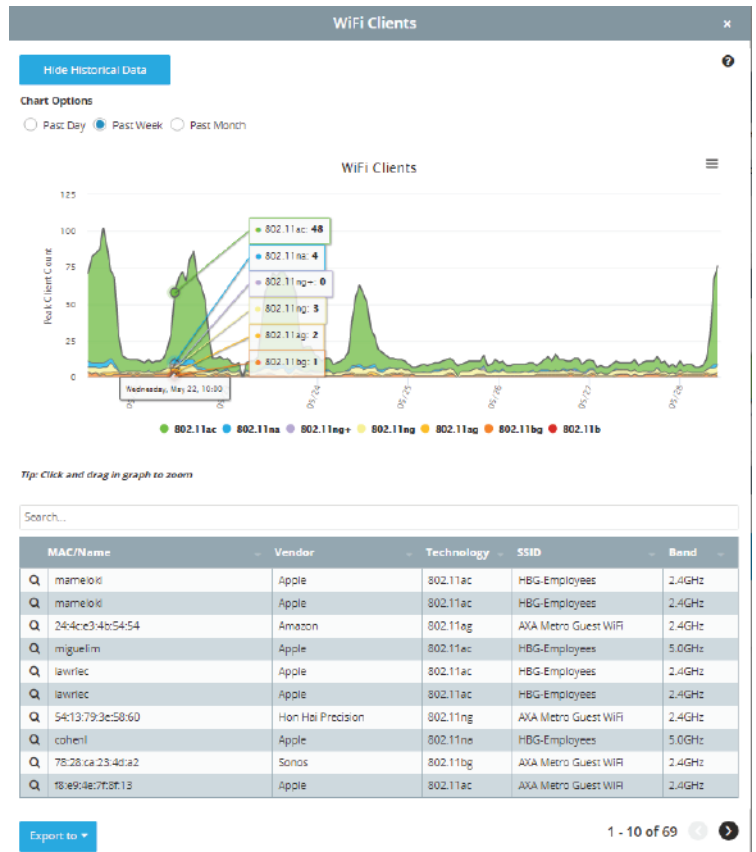
REMOTE NETWORK TEST SUITE

The Network Test Suite runs remote tests on a scheduled or periodic basis over Wired and Wireless Networks, with the ability to run scheduled tests on demand. WIP sends automatic alerts if any test fails so that resolutions can be found immediately, and can copy tests across locations and SSIDs. WIP proactively performs a Wireless Connectivity and Internet Connectivity/Ping Tests; Application Tests; Performance Tests; Device Monitor Tests; Device Discovery Tests; Security Audit Test; a DNS Server Test; and Throughput Testing.



HISTORICAL DEVICE FORENSICS

Go back in time with the user interface and discover how specific devices operated at a point in the past. Study network events in depth, even if the exact conditions in question no longer exist.



EXPORT DATA, REPORTING & LOGGING

Export real-time and historical wireless network data from a number of tables and graphs.

Share data with associates to support business analytics, monthly updates and quarterly reviews.

COMPLETE WIRELESS ECOSYSTEM VISIBILITY

Instant, visual updates of the entire network, including data from non-WiFi sources, provided with long-term pattern recognition, fingerprinting and behavioral profiling.

WiFi and client issues are displayed on WIP's dashboard, color-coded based on severity. Issue details and solutions are provided on the sensor status page.